



LNYP PHOTOS
PAGE 3



SLAM SLIDESHOW
ONLINE

Student Life

the independent newspaper of Washington University in St. Louis since 1878

Monday, February 7, 2011 ▪ Vol. 132, No. 48 ▪ www.studlife.com ▪ Washington University in St. Louis

LNYP welcomes Year of the Rabbit



ERIC CHALIFOUR, GENEVIEVE HAY, JOHN HERGENROEDER, MATT MITGANG & MARIAM SHAHSAVARANI | STUDENT LIFE

Student performers welcome in the Year of the Rabbit as part of this year's Lunar New Year Festival. Shows on Friday and Saturday capped off the weeklong festivities that began with a fireworks display on Jan. 30.

HALEY HAN CEN
CONTRIBUTING REPORTER

Students commemorated the Lunar New Year this weekend for the 15th consecutive year with the Lunar New Year Festival (LNYP) performance on Friday and Saturday in Edison Theatre.

The two weekend shows brought the weeklong Lunar New Year celebration to a close, which began with a fireworks display on Jan. 30.

As of 2 p.m. on Saturday, the box office reported selling 546 tickets for Friday night's show and 534 for Saturday's—around 200 more tickets than were sold last year.

The 14 performances contained within each show included a lion dance, fusion, hula, "tinikling," hip-hop, ribbon and fan dances, yo-yo, juggling, and Korean drumming.

"It is the first time for me to see the show," junior Matt Snider said. "I really love how the artsy and

unique performances brought about different kinds of Asian culture and managed to accept American culture at the same time."

Audience members also appreciated many specific parts of the performance.

"I like how some performances did a beautiful job of imitations, like the Chinese fan and Samul-nori (the Korean drumming performance). And the costume for the Tibetan dance is amazing," said junior Laura Edison, who has been to every LNYP show since her freshman year.

Sophomore Lauren Pinaroc also enjoyed the show. "It's imaginative, original and fabulous!" she said.

The audience's cheering and support also encouraged the performers.

Senior Ashley Sham was in the fusion and senior dances this year.

"The interaction with the audience really means a lot to us because

it helps us tell a better story," Sham said.

Seniors Annie Cai and Anthony Pham, co-coordinators for LNYP 2011, were extremely pleased with the show.

"We would like to thank the warm and enthusiastic audience. We also brought back fireworks to kick off our Lunar New Year Festival week in conjunction with Asian Multicultural Council. Ultimately, we hope that we were able to enhance the Lunar New Year experience for our audience members," Cai said.

The impressive performances also encouraged some audience members to consider joining LNYP next year.

"I was so moved when I saw how the performers were engaged and enjoyed their show," freshman Lily Tianyi Cai said. "I wish I can be one of them next year."

Write to Haley Han Cen at
HALEY.CEN@STUDLIFE.COM

Accident causes Wheeler flooding

Students displaced for at least three days

MICHAEL TABB
NEWS EDITOR

Around 5 p.m. Sunday, students were evacuated from Wheeler House due to flooding in the west wing of the first floor.

A sophomore, jumping over a chair to get into his room, hit his head on a sprinkler on the ceiling, which exploded with an odorous fluid that flooded the surrounding suites.

Students promptly left the building, and University Facilities shut off the water supply to the area. No one was hurt, though residents of the flooded suites will be displaced for at least three days.

An ambulance crew and police officers arrived at Wheeler before Facilities, which was already managing an issue with a frozen pipe in the Wohl Garage.

According to David French, a mechanic employed by the University, the sprinkler triggered an alarm, which notified the ambulance.

"If they get an alarm, they automatically come," French said. "If they do get here [before Facilities handles the situation], it's 500 or a thousand dollars."

Students sat calmly in the lobby watching the Super Bowl as the resident assistant spoke with the ambulance crew and a resident moved his dripping belongings into storage.

Woodard Cleaning & Restoration Services responded to an emergency call and arrived to handle the water damage. According to Ed Litty, a restoration project manager for Woodard, the team would be there for several hours working on the area.

After vacuuming the water that saturated the hallway carpet, Litty said that the workers planned to strip the molding off the wall to remove wet insulation and insert drying equipment. They also planned to disinfect the area with an antimicrobial.

"It's going to reek with the standing water in the pipes," said one of the suitemates. "But we didn't have that much property damage—we got our stuff off the floor pretty quickly."

Write to Michael Tabb at
MICHAEL.TABB@STUDLIFE.COM

Dining Services responds to new US guidelines on healthy eating

KELSEY TIMES
CONTRIBUTING REPORTER

As federal officials emphasize the importance of healthy eating, the newly released 2010 Dietary Guidelines for Americans challenge Washington University dining menus to meet higher standards.

The U.S. Department of Agriculture and Department of Health and Human Services have administered new guidelines out of concern for Americans' overall health, as obesity, heart disease and other illnesses linked to food have become increasingly prevalent in the last decade.

Washington University Dining Services will work with these new guidelines to continue providing healthy options for students.

The government agencies advise Americans to curb overeating habits to maintain the proper caloric intake specific to their age and physical condition.

The report recommends that half of each plate contain fruits and vegetables. It also encourages eating whole grains with

daily meals and choosing foods with higher amounts of potassium, dietary fiber, calcium and vitamin D.

Americans are also encouraged to vary protein in their diets and to consume more fat-free and low-fat milk products.

Although sodium intake recommendations have not changed since 2005, the report continues to warn against high intake, setting 2,300 milligrams as the maximum daily amount. It also advises a reduced intake of 1,500 milligrams for African Americans, people with hypertension, diabetes or chronic kidney disease, or those older than 51.

This is the first time the government has advised people to eat less. The report directly advises the American people that they should drink water, not soda, and manage their caloric intake.

The report cited concerns that 72 percent of men and 64 percent of women are overweight, while approximately one-third of all citizens are obese.

"Dietary Guidelines for
SEE HEALTHY, PAGE 2

Bon Appétit, students work on bringing room service to South 40

BECKY PRAGER
STAFF REPORTER

Walking outside for food will soon be optional.

Sophomores Jordan Zipkin and Philip Taub are working with the Bon Appétit Management Company, which operates the campus eateries on the South 40, to implement a service that allows students to order food online to be delivered directly to their dorm rooms.

The program, called Bear

Deliveries, would expand the WebFood program, which currently allows students to place orders online to be picked up at the DUC or Bear's Den, allowing students to avoid long lines at busy mealtimes.

Taub and Zipkin's idea is to have students place their orders on WebFood, and instead of having to pick the food up, they would be able to have their meal delivered to any dorm on the South 40, free of charge.

Taub came up with the idea a year

ago when he was a freshman.

"I woke up one Saturday morning and thought to myself, 'Man, wouldn't it be great if I could have food in my bed right now without having to leave my room?'" Taub said. "I kind of just took that idea and ran with it."

After joining up with Zipkin, a fellow business school student, the two reached out to administrators, eventually getting the chance to make the

SEE SERVICE, PAGE 3

UTrucking pays flood claims

JENNIFER WEI
STAFF REPORTER

Eight months after the torrential downpour that flooded students' storage boxes last May, UTrucking Inc. is now writing reimbursement checks to all those who filed claims for their belongings.

UTrucking is a student-run storage business located on the South 40. Founded in 1977, the company serves 1,400 Washington University students by moving and storing their

belongings between academic semesters or when students are studying abroad.

In May 2010, heavy rainfall flooded a portion of UTrucking's vaults on North Campus before their transit to a final storage location. After returning to campus in August, nearly 10 percent of UTrucking's customers found their belongings water-damaged and covered in mold.

According to Chief Financial Officer J.D. Ross, UTrucking's insurance company did not cover

flood-related damages, forcing the company to cover the damages as an out-of-pocket expense.

While insurance contracts with students only insured \$100 per box, the owners of UTrucking reimbursed students more than 2.5 times the amount their policy had promised.

"We had an ethical obligation to go above and beyond [the insurance policy]," Ross said. "We're part of the Wash. U. community. We just

SEE UTRUCKING, PAGE 3

Student Life **READ ALL OVER**

HOUSING FAIR 2011

FEBRUARY 10 >>> 10 A.M. - 3 P.M. >>> DUC SECOND LEVEL
STOP by the FAIR to REGISTER to WIN an iPod TOUCH

CONTACT BY POST
ONE BROOKINGS DRIVE #1039
#330 DANFORTH UNIVERSITY CENTER
ST. LOUIS, MO 63130-4899

CONTACT BY EMAIL
EDITOR@STUDLIFE.COM
NEWS@STUDLIFE.COM
CALENDAR@STUDLIFE.COM

CONTACT BY PHONE
NEWSROOM 314.935.5995
ADVERTISING 314.935.6713
FAX 314.935.5938



the flipside

WEATHER FORECAST

MONDAY 7

FLURRIES
30 / 17



TUESDAY 8

CLOUDY
21 / 14



EVENT CALENDAR

MONDAY 7

Assembly Series Lecture: "Angels of Our Nature: Polarization in America and Its Challenges for Universities and Think Tanks."
Whitaker Hall Auditorium, 4 p.m.
Strobe Talbott, President of the Brookings Institution, will speak in this lecture sponsored by the Office of the Chancellor and the Office of the Provost.

Sex Week Panel: Abstinence in a College Setting
Graham Chapel, 7-8:30 p.m.
Come hear opinions about abstinence, including those of representatives from the Catholic Student Center, Planned Parenthood, Washington University School of Medicine and Student Health Services.

TUESDAY 8

Political Activism at Washington University: A Reflection on the Bristol Palin Controversy
Danforth University Center 234, 7:30 p.m.
The Political Science Student Association is hosting this panel to discuss the inner workings of Washington University's student government. The main focus will be on the Bristol Palin controversy. Speakers will include Student Union representatives and those who opposed the decision to bring Palin to campus.

Women Gender and Sexuality Studies Lecture: "Trading Sex in the City Perspectives and Solutions."
Whitaker Hall, Room 100, 5 p.m.
This panel will delve into the issue of the sex trade in St. Louis.

Tuesday Tea @ 3
DUC Commons 3 p.m.
Relay for Life will provide free tea and cookies. Open to all students and faculty.

QUOTE OF THE DAY

“What we've seen since 9/11 is a significant increase in classification of government information and reduced transparency on grounds that releasing such information would jeopardize state secrets.”

— Adjunct Professor of Law Denise Lieberman on the recent arrest of Jeffrey Sterling, a Washington University law school graduate, for distributing classified information.

HEALTHY FROM PAGE 1

Americans, 2010 is being released at a time of rising concern about the health of the American population,” the report said. “Its recommendations accommodate the reality that a large percentage of Americans are overweight or obese and/or at risk of various chronic disease.”

This year's guidelines are considered to be the strongest ever released.

Agriculture Secretary Tom Vilsack has promoted the new guidelines and shared his hopes for Americans of all ages.

“The bottom line is that most Americans need to trim our waistlines to reduce the risk of developing diet-related chronic disease,” Vilsack told The New York Times. “Improving our eating habits is not only good for every individual and family, but also for our country.”

According to Connie Diekman, director of University nutrition, Washington University sees healthy eating as a priority and works to provide students with nutritious choices.

“We have used the dietary guidelines to plan menus since I have been with the University,” Diekman said. “We will use the 2010 guidelines as we make menu and recipe changes.”

The University is shifting toward offering a wider variety of healthier options, and adding more fruits and vegetables is an area in which it continues to improve. Although pasta, pizza and salads are the primary dishes with vegetables, University chefs are working to develop more entrées that include vegetables. Meanwhile, steamed vegetables are available in all dining locations on campus and can be added as a side to complement vegetable-deficient dishes.

In addition to selling fresh fruit, Dining Services incorporates fruit in salsas, prepackaged salads and pastries. Dining Services also hopes that “Connie's Choice,” a brand-new healthy option initiative, will make it easier for students to eat well.

While the University frames its menus around the 2,300-milligram recommended maximum daily intake of sodium, some items have more sodium than the recommended amount. Because students request these dishes, they are still on the menu.

“Our goal is to offer options that allow our students to eat in a manner that helps them follow the guidelines,” Diekman said. “It's a combined responsibility. The options have to be there, but the individuals make the choices. This is no different from the decisions, in my perspective, of, ‘Should I go out this weekend, or should I do those five papers?’”

While some students grumble over reduced portion sizes, others complain about the inaccessibility of healthy choices. Diekman concluded that the University wants to do what is best for its students and seeks to attain a happy medium among student demands.

“We will never be able to please everyone all the time,”

Diekman said. “Therefore, our goal is to provide the options that students indicate they'd like to have, to provide the information to help those who want to make better choices make those choices, and then to listen to their feedback. We're doing what we think is a good way to help students eat healthier, but if you have better suggestions, we want to know them.”

Write to Kelsey Times at
KELSEY.TIMES@STUDLIFE.COM

Dietary Guidelines for Americans, 2010

Maintain a calorie balance over time to achieve and sustain a healthy weight

- Improve eating and physical activity behaviors.
- Control calorie intake to manage body weight.
- Reduce sedentary behaviors and increase physical activity.
- Consume appropriate number of calories for each life stage.

Focus on consuming nutrient-dense foods and beverages

- Reduce sodium intake.
- Replace saturated fatty acids with unsaturated fatty acids.
- Consume less than 300 milligrams of dietary cholesterol each day.
- Limit trans fat consumption.
- Consume fewer calories from solid fats and added sugars.
- Increase whole grain consumption and decrease intake of refined grains.
- Consume alcohol in moderation if consuming at all.
- Increase fruit and vegetable consumption.
- Consume fat-free or low-fat milk products.
- Choose a variety of proteins, including fish, beans, nuts and seeds.
- Replace fatty proteins with lower-fat proteins (like seafood).

Points taken from the executive summary of Dietary Guidelines for Americans, 2010

nail spa salon

professional nail care service for ladies and gentlemen by christina nguyen

debye treatments include a sea soak, sea scrub, sea salt glow, marine masque, massage oil, and hot towel

mon - thurs: 10 am - 8 pm
fri - sat: 9 am - 8 pm
sun: 11 am - 6 pm

6648 clayton road • richmond heights, mo 63117 • (314) 645-7111
www.christinanailspa.com

"Closest Campus Drugstore"

Corner of Forest Park Pkwy and Big Bend
7010 Pershing Ave • (314) 727-4854

WILLIAMS PHARMACY
Serving Wash U Students, Faculty & Health Service for Over 50 Years

- Most National Insurance Accepted
- Delivery Available
- Student Discount on Prescriptions
- 1-Day Film Developing
- Soda, Snacks, Beer & Wine
- Cosmetics
- ATM
- Let our pharmacists assist you in your over-the-counter medication needs

Open Mon-Fri: 9am-9pm
Sat: 9am-7pm, Sun 10am-4pm

APARTMENTS

Short walk to campus

- Highest Quality and Excellence
- Immediate Maintenance Response

LEASING NOW
314-608-2692

London PROPERTIES LLC

Filling up fast for leases starting January 1st and June 1st!

Find out what luxurious living looks like!

THE PRESIDENT THE PARK ROYAL

4615 Lindell Blvd., St. Louis, MO 63108
(314) 367-1207

- Parquet wood floors
- Crown molding
- Spacious closets
- Decorative fireplaces
- Screened balconies
- Reserved indoor parking
- Resident service center
- Large outdoor terrace
- Fitness center
- Pets welcome!

Biancoproperties.com | 4615Lindell@Biancoproperties.com



1) JOHN HERGENROEDER 2) MATT MITGANG 3) GENEVIEVE HAY 4) JOHN HERGENROEDER 5) MARIAM SHAHSAVARANI 6) MATT MITGANG 7) MATT MITGANG | STUDENT LIFE

forum

STAFF EDITORIAL

University should take its own sustainability pledge

On Jan. 24, Washington University released a new pledge in an effort to help students go green (formally called a “pledge for sustainability.”) Designed to encourage students and staff to consider their environmentally harmful decisions and make changes accordingly, the pledge calls for participants to reduce their carbon footprints. We commend this pledge, as we would any effort to promote responsible sustainability and reduce waste.

We do, however, want to make note of the hypocrisy inherent in this pledge, given Washington University’s continued affiliation with Peabody Energy and Arch Coal.

Gregory Boyce and Steven F. Leer are the CEOs of Peabody Energy and Arch Coal, respectively, and both serve on Washington University’s Board of Trustees. The Board of Trustees is arguably the most influential force on the University: The trustees appoint the Chancellor, review and approve annual budgets and major capital expenditures, make final decisions on awards of tenure and degrees and on new degree programs, oversee the management of the endowment, and oversee and participate in development programs. In short, the trustees are responsible for overseeing almost every policy aspect of Washington University and thus are the steering force behind the operations of the administration,

faculty and staff.

Peabody Energy, the largest private-sector coal company in the world, has long been highlighted as a major environmental offender. Peabody actively opposed the Clean Air Act in 1970 and acid rain provisions in the 1990 Clean Air Act amendments, as well as current efforts to strengthen mercury provisions. Many major executives of Peabody Energy head up the National Coal Council, which called for more than doubling U.S. coal consumption by 2025 in a recent report.

Last year, Peabody spent a total of \$5 million lobbying Congress and other government agencies in an effort to block prospective climate legislation.

Arch Coal, the second-largest provider of coal in the U.S. behind Peabody, has been called into question for its practice of mountaintop removal mining in West Virginia, which reduces the height of mountaintops, removes all vegetation and contaminates mountain streams with mining waste. This contamination leads to flooding, erosion and an unsafe water supply, which in turn leads to the depopulation and disintegration of mining communities.

The “Peabody Plan” for eliminating energy inequality, released last fall, asks that at least half of the next generation be fueled by coal. It calls for replacing traditional coal plants

with supercritical and ultra-supercritical plants, which are more efficient and carbon capture ready, and mandates that at least 100 major projects around the world capture, store or use carbon dioxide from coal-based plants within 20 years. It edicts the deployment of significant coal-to-gas, coal-to-chemicals and coal-to-liquids projects around the world over the next 10 years and heralds more efficient coal utilization technologies as the key to reducing the environmental impact of human energy use.

The Environmental Protection Agency (EPA), however, estimates that if current petroleum usage is replaced by coal-to-liquids projects with no change in carbon technologies, greenhouse gas emissions will increase by 119 percent. If carbon capture and storage technologies are employed, the EPA predicts that greenhouse gas emissions will still increase by 4 percent. It would seem, based on these numbers, that the Peabody Plan’s primary objective is continued coal profits—not sustainability.

Washington University’s endorsement of strategies similar to those promoted by Peabody became clear in 2009, when Peabody, Arch Coal and Ameren UE, whose former CEO is also on the Board of Trustees, contributed a total of \$12 million to help found the Washington University Consortium for Clean Coal Utilization. The Consortium seeks to advance research on carbon recapture and

sequestration technology—in short, finding new and more efficient ways to use energy obtained from coal.

When asked about Washington University’s connection to Peabody and Arch Coal in an interview with Student Life in the fall of 2009, Chancellor Mark S. Wrighton said, “This is big business and we need all the help we can get. The carbon providers—by the opinions of others—maybe they’re the bad guys, but there’s no other game in town.” He continued, “We can’t take something off the table until we come to grips with our ability to meet the power demands that we require.”

We ask that Wrighton cease shying away from the dangers of the continued use of coal and the problems posed by the “Peabody Plan,” in particular the goals for coal-to-liquids projects. We find it patronizing that Washington University would ask us to sign a pledge for sustainable actions when its most powerful governing body does not seem to prioritize sustainability.

We also sincerely hope that, in keeping with the spirit of this pledge, students will direct activism at Washington University’s continued investment of resources in research on coal-based technologies—resources that, we feel, would be better directed at research that seeks to discover and implement new energy sources that do not harm our environment.

Why you should care about room reservation fees

DAN ROBINSON
OP-ED SUBMISSION

I am a Student Union Senator who voted for the recent resolution against Residential Life’s new room rental fees. I would like to offer my reasoning for the way I voted as well as respond to my fellow senator, Joseph Marcus, who does not support the resolution. He argues that SU should not attack the eight students that work as Event Assistants in exchange for free housing, and that these fees only follow the trend of other departments that have compensated for smaller budgets by passing on some cost to students. He states that unlike printing and transcripts costs, which actually require spending more money, the room rental fees only change how the Student Activities Fee, money we already spend, is allocated.

In response to Marcus’ first point, I completely agree that we should not attack the eight student Event Assistants. They have done nothing wrong in pursuing a leadership opportunity on campus. It is the exorbitant compensation for this position from an already strained ResLife budget that is the problem. No one should be attacking students for taking a well-paying job that gives them valuable leadership experience.

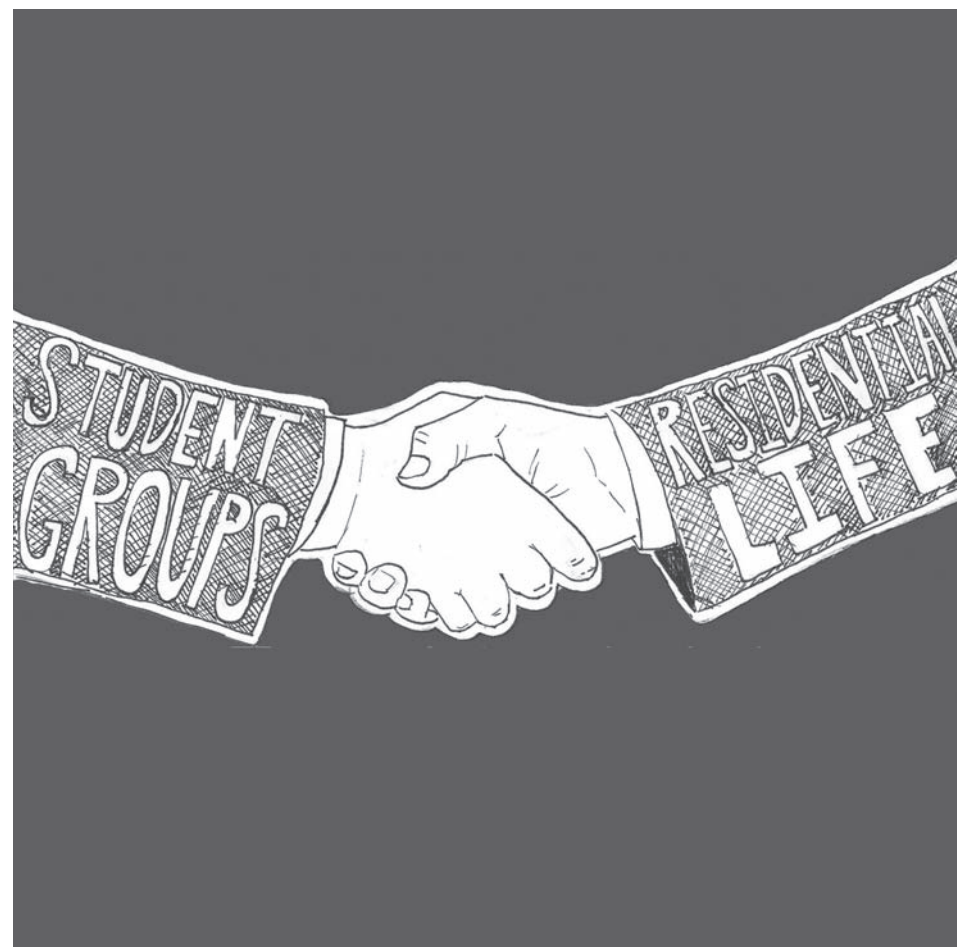
Regarding other fees on campus, Marcus is correct that there are new, less-contested fees that have been implemented in the last few years for services that were once free, such as increased printing charges and the new five dollar fee for each official transcript. Printing and transcript fees are not analogous to fees for Residential Life premier spaces, however.

Unlike printing an official transcript, which only benefits the individual student, the use of premier spaces is mutually beneficial to the groups that put on events, the other students who attend and the university administration. When students are able to have large,

visible events in Residential Life spaces, it enriches the community as a whole. This not only makes students’ lives better, but also makes Wash. U. a much more attractive university, something that the administration should value. This is the crucial concept that Residential Life has failed to understand. These spaces aren’t just a service to make students happy; they help define the Wash. U. experience.

Marcus’ second argument is also problematic because it assumes that SU would directly subsidize the cost of room rentals for student groups or Treasury would fund all appeals to pay for the room fees. It would cost about \$32,000 a year for student groups to use the ResLife spaces they had used for free in years past. It’s doubtful there’s room in the SU budget for a \$64,000 direct subsidy to make the rooms free for students, and it’s equally doubtful that Treasury would fund all room rental requests from the appeals budget. The end result would, indeed, be no new money. Instead, cash-strapped student groups would be forced to change the location of events to spaces that are less prominent and less attractive. Such a move would almost certainly have negative consequences on the success of these events, the well being of the groups and our community as a whole.

Marcus’ argument is also flawed because it assumes that the only affected parties are SU student groups. Although student groups are the predominant users of these spaces, other organizations have already been affected by the fees. Furthermore, these organizations would see no relief from an SU-funded remedy to the fees. As Marcus correctly stated in his defense of the eight students who work as Event Assistants, SU Senators represent ALL students. This includes those in organizations not affiliated with SU. Greek organizations, specifically fraternities, are one group that have been negatively affected by the fees.



ERIN MITCHELL | STUDENT LIFE

Many chapters hold recruitment events in Urso’s or elsewhere on the South 40 as part of their recruitment schedule. This location is ideal because it is so visible to freshmen on the 40. These fees put a strain on chapters’ recruitment budgets, which unlike most other chapter spending, benefit students outside of the chapters. Recruitment begins with open events, which are completely free for all Wash. U. males and give them the opportunity to see what the Greek community has to offer. The new Residential Life fees are a problem that extend beyond just SU and its student groups.

Hopefully, this resolution will serve as an impetus for effective dialogue between Residential Life and students in which both sides can negotiate a solution to this problem. While I am against the fees, I would certainly prefer a cost structure that better meets students’ needs than a continuation of the highly flawed system currently in place.

Dan Robinson is a junior in Arts & Sciences. Write to Dan at DANIELROBINSON@WUSTL.EDU



studlife.com

RE: Senate passes resolution for continued dialogue with ResLife

Students should not protest in ways that harm the community even MORE than the new usage fees. Sabotaging admissions efforts only hurts everyone. Boycotting

Reslife premier spaces highlights the actual problem—students don’t have the means to pay for the fees—and forces Relife to keep their marquee spaces locked and empty as a

result of policies THEY ENACTED.
—Student

Fees are popping up everywhere on campus. I don’t think you can blame ResLife for be-

ing a latecomer in the usage fee game. Over the past couple years fees have come up that effect students and further cost the students “new” money and has been met with little stu-

dent resistance. When student groups have a new fee, students are up in arms.
—Joseph Marcus

OUR VOICE: EDITORIAL BOARD

Editorials are written by our opinion editors and reflect the consensus of our editorial board. The editorial board operates independently of our newsroom.

editor in chief: **Kate Gaertner**
executive editor: **Josh Goldman**
managing editors: **Shayna Makaron & Dan Woznica**
senior sports editor: **Alex Dropkin**

senior scene editor: **Hana Schuster**
senior cadenza editors: **Percy Olsen & Stephanie Spera**
senior photo editor: **Matt Mitgang**
senior forum editor: **AJ Sundar**
forum staff: **Sophie Adelman, Daniel Deibler, Chase Ferree, Eve Samborn & Natalie Villalon**
director of training: **Perry Stein**
director of image & relations: **Evan Wiskup**

YOUR VOICE: SUBMISSIONS

We welcome letters to the editor and op-ed submissions from our readers. Submissions may be sent to letters@studlife.com and must include the writer’s name, class and phone number for verification.

Letters should be no longer than 350 words in length, and readers may also submit longer op-eds of up to 750 words. We reserve the right to print any submission as a letter or op-ed.

OUR WEB POLICY

Once an article is published on studlife.com, it will remain there permanently. We do not remove articles or authors’ names from the site unless an agreement was reached prior to July 1, 2005.

SERVICE FROM PAGE 1

idea a reality.

A pilot of the program is scheduled to start after Spring Break with a limited menu of Bear's Den options and deliveries available for only the South 40 residence halls.

"Our first big expansion will be to expand the options offered to students for delivery to include the whole Bear's Den menu" Zipkin said. "After that, we hope to expand our deliveries other places like the Village and the art school."

The two students have been working closely with Nadeem Siddiqui, resident district manager of Bon Appétit at Washington University.

"I think it has to be carefully, logistically managed to ensure that services are excellent and that when the food gets to students, it's the right order and it's still hot," Siddiqui said. "But the idea has tremendous potential."

Siddiqui has considerable experience collaborating with students. Webfood was originally presented to him by students at Cornell while he managed dining services there. The program has now spread to campuses across the nation.

"I think it's a great thing when students come with ideas and you can help them

implement them," Siddiqui said.

While Zipkin and Taub haven't heard of a food delivery system in place at any other universities, they are aware of a service that a lot of schools have called Midnight Cookies, in which students can order fresh-baked cookies to be delivered to their rooms at late hours of the night.

"Kids seem to love Midnight Cookies, so we're hoping at some point to do something similar," Taub said.

Members of the freshman class have developed ideas similar to Bear Deliveries, but Bon Appétit chose to work with Zipkin and Taub since they had been working on their project throughout the past year. Zipkin and Taub, however, would like to work with these other students in the future.

"This can't be a two-man-show forever, and we're excited to work with them and other people with similar ideas in the future," Zipkin said.

"It'll make it easy and convenient for students, and they can use meal points which is another efficiency," Siddiqui said. "It's a great idea."

Write to Becky Prager at BECKY.PRAGER@STUDLIFE.COM

Law school graduate charged with leaking classified information

WEI-YIN KO
STAFF REPORTER

Former CIA officer and Washington University School of Law graduate Jeffrey Sterling has been charged with distributing classified information.

He is accused of leaking classified documents and information regarding a CIA program to a New York Times reporter.

According to the St. Louis Post-Dispatch, Sterling, 43, was arrested on Jan. 6 on 10 counts ranging from obstruction of justice to unauthorized disclosure of national security information.

He pleaded not guilty last month and was released on \$10,000 bail.

Sterling's tenure with the CIA was rocky. In 2001, while he was an intelligence officer, Sterling filed a racial discrimination suit against the agency. The suit was dismissed that April on national security grounds.

The prosecutor in the current case cites the discrimination lawsuit as evidence of Sterling's discontent with the agency.

The prosecutor claims this discontent to be motive for Sterling leaking classified information to the reporter.

The online news site Politico reported in late January that details in the indictment "make clear that the author in question is New York Times reporter James Risen, while the program appears to be a CIA effort to undermine Iran's nuclear ambitions."

According to the prosecution, the supposed leak was motivated by spite rather than money.

U.S. District Court judge Leonie

Brinkema has rejected the prosecution's request to keep Sterling behind bars.

Sterling's charge was made complex by the ambiguity of the classified information he allegedly leaked.

"The government standards for classification of information are rather vague, and the executive branch can classify at its discretion," said Denise Lieberman, a St. Louis lawyer and an adjunct professor at the Washington University School of Law. "What we've seen since 9/11 is a significant increase in classification of government information and reduced transparency on grounds that releasing such information would jeopardize state secrets."

Classification deals with contemporary political issues, including terrorism.

According to Lieberman, this case could have important political ramifications.

"On a separate topic, this case also has the intriguing leak issue and the extent to which his current prosecution could be politically motivated," Lieberman said.

Sterling is currently in the custody of a local couple. His next trial date is set for Sept. 12.

Write to Wei-Yin Ko at WEIYIN.KO@STUDLIFE.COM

UTRUCKING FROM PAGE 1

thought it was the right thing to do."

Students were reimbursed at least \$100 per box. If they had filed for more than that amount, they were given an additional reimbursement proportional to the amount they had filed.

Sophomore Vera Xiao had filed a value of \$1000 for her suitcase full of winter jackets and formal clothing. She received \$500 in reimbursements.

"I'm satisfied," Xiao said. However, she indicated that perhaps UTrucking should find an insurance company that also insures floods, saying that this would ensure that UTrucking would not have to pay out of its own pocket.

UTrucking is currently looking to switch to a more "customer friendly" insurance company. According to Ross, the reimbursement process was prolonged due to difficulties contacting its current insurer.

"The agents that we were working with were constantly avoiding our calls," Ross said.

The insurance agent only responded after

UTrucking expressed that they would seek legal consultation if the problem continued.

The flooding incident was the first in business' history, and the student owners have made changes in their operations for the future.

Starting this year, the vaults, which sit in a parking lot on North Campus during transportation, will be positioned on a higher elevation to ensure their protection even in cases of heavy flooding.

"It's going to make [moving] slower and harder, but [student belongings will] be safe," said Ross.

UTrucking is among several student-run businesses operating under the Student Entrepreneur Program (StEP) at the Olin Business School. According to Ross, UTrucking's advisers have been happy with the business's response to the incident.

Write to Jennifer Wei at JWEI@STUDLIFE.COM



MATT MITGANG | FIRST YEAR CENTER

Students unload their own boxes during Move In in August. The student business UTrucking will deliver boxes directly to a customer's room if they sign up for the service.

CREAM RISES TO THE TOP.
THIS IS WHERE IT'S **stirred.**

There's a difference between communicating ideas and experiencing them. It's the difference between memorizing a foreign language and thinking in one. Between studying ruins and excavating them. Between analyzing dreams and living them. The difference is *huge*. And it's the very essence of the University of Chicago Summer Session. Where students are engaged at every level—intellectually, socially, personally, and professionally. Where you can benefit from the value of taking university courses in an accelerated, intensive format. Join us this summer for an extraordinary learning experience at the academic home to 85 Nobel laureates.

FOR STUDENTS IN HIGH SCHOOL, COLLEGE, AND BEYOND.
JUNE 20—AUGUST 26, 2011
3, 4, 5, AND 6-WEEK SESSIONS

For more information:
summer.uchicago.edu/wu
773/702-6033
summer@uchicago.edu

THE UNIVERSITY OF
CHICAGO
Summer Session '11

who made this?

Kate Gaertner
editor in chief

Josh Goldman
executive editor

Shayna Makaron
Dan Woznica
managing editors

Michelle Merlin
senior news editor

AJ Sundar
senior forum editor

Alex Dropkin
senior sports editor

Hana Schuster
senior scene editor

Percy Olsen
Stephanie Spera
senior cadenza editors

Puneet Kollipara
enterprise editor

Matt Mitgang
senior photo editor

David Seigle
online editor

Erin Mitchell
graphics editor

Evan Freedman
design chief

Mary Yang
design editor

Ariella Elovic
Chris Hohl
Kevin Madsen
Mike Yang
designers

Rachel Noccioli
copy chief

Nora Long
assistant copy chief
Greg Herman

Allie Kornstein
Donna Leung
Michelle Aranovsky
copy editors

Perry Stein
director of training
Judith Ohikuare
director of multimedia

Evan Wiskup
director of image & relations

Andrew O'Dell
general manager

Sara Judd
advertising manager

Copyright 2010 Washington University Student Media, Inc. (WUSMI). Student Life is a financially and editorially independent, student-run newspaper serving the Washington University community. Our newspaper is a publication of WUSMI and does not necessarily represent the views of the Washington University administration.

scene

Stepping Out

Océano Bistro



44 N. Brentwood Drive
Clayton, MO 63105
314.721.9400
www.oceanobistro.com

FRANCIS AGUILLARD
SCENE REPORTER

If these wintry days have you in a somber mood, Océano Bistro is sure to put a smile on your face. With a largely seafood-inspired menu, each dish is an ode to a coastal city and warm sun rays.

The restaurant's selections range from local Missouri trout to sea bass and scallops. Tropical and Mediterranean undercurrents flow through many of the dishes, like the grilled mahi mahi with seared polenta, sweet tomato marmalade and a blood-orange and fennel-citrus relish.

I started with the Umami Kobe sliders, knowing that I would have plenty of seafood options for the second course. The two small sandwiches of plump Kobe beef, Vermont white cheddar cheese and pickles on airy homemade brioche rolls

intrigued me. I was anxious to sample their bold attempt to capture the elusive "fifth flavor"—umami, a taste distinct from sweet, sour, salty and bitter.

Unfortunately, the burgers were a bit dry and lacked the delicate arrangement and vibrant flavors of some of the other appetizers, most notably the spicy blackened bigeye tuna with ginger, roasted red pepper and a spicy mustard emulsion.

Fortunately, the blackened tuna set the tone for the rest of the night. For my entrée, I selected the herb-crusted sea bass. The fish was seared to a perfect brown and was firm and fresh. The risotto that accompanied it complemented the fish rather well, featuring pureed butternut squash. The fish and risotto sat nestled in a ring of Prosecco buerre blanc, a rich sauce made from reduced Italian sparkling wine, vinegar, shallots and butter; however, I could

have done without the beurre blanc and more of the smooth risotto.

Other seafood entrées include the grilled farm-raised Atlantic salmon with shaved apple-fennel salad and a bacon wrapped arugula cake with cider jus. While I did not try this dish, the waiter promptly informed the table during ordering that the salmon was raised in an aquaculture farm that he felt was similar to the conditions in which a free-range chicken would live.

I finished my meal with a gooey, semi-sweet phyllo-wrapped brownie. The phyllo crust enveloped the molten brownie in such a crisp shell that you could hear the layers of the crust cracking as the spoon dug into them. This Aegean-inspired brownie was topped off with a dollop of vanilla ice cream and surrounded by a vanilla-bean flecked crème anglaise—a kind of light custard.

Océano's meal put the table in such a chipper mood that we stayed chatting long after we had finished eating (probably hoping for some other delicious dish to make its way over).

Outfitted in warm colors and bathed in soft light, the restaurant's ambiance would be perfect if not for the peculiar lack of tablecloths. Océano's atmosphere is casually sophisticated, perfect for an anniversary or celebration with friends, with entrées ranging from \$18 to \$32. If you go before Feb. 10, you can have their three-item tasting menu for \$25—a perfect way to ward off the winter blues and satiate a curious palate.

Write to Francis Aguilard at
FRANCIS.AGUILLARD@STUDLIFE.COM

Not your average bowl-game: Practicing and competing with the Academic Team

PERCY OLSEN
SENIOR CADENZA EDITOR

Had I entered the practice room at a different time, I wouldn't have felt so lost. But—as I would soon learn—I wasn't born with the necessary timing to keep up with the Washington University Academic Team (WUAT), the University's in-house Quiz bowl squad. When I opened the door, I was greeted by a loud ringing noise—sophomore Charles Hang had just buzzed in.

"It's um, like, Kyoto," he said.

"Ten points," said senior Peter Glaser, who was moderating the round. I sat at the end of the conference table and started to introduce myself to a couple of people, but the round was almost over, so there wasn't time for an in-depth conversation.

The next toss-up began: "The Ancient Iranian prophet..."

I whipped out my notebook and tried in vain to keep up. Looking back at my scribbled notes, I see that I managed to write down, "The Ancient Iranian prophet blah blah word blah for ten points name that (incomprehensible cursive)."

"Um, frickin' elliptical," answered fourth-year graduate student Gordon Arsenoff.

Wait, that doesn't make sense. Two minutes in, and I'd already zoned out for a question. And as I worried about the logistics of covering the WUAT practice, I missed another one.

"This is frackin' 'Midsummer Night's Dream,'" said Arsenoff.

Arsenoff slapped himself. He seemed intense. In fact, everything seemed intense. I threw my notepad aside and started recording the practice with my phone.

As I learned, WUAT was practicing for NAQT Region 11 SCT in Springfield, Mo., which stands for the National Academic Quiz Tournaments' Sectional Championship Tournament in Region 11. This region more or less covers Missouri and its immediately surrounding states. Wash. U. was sending one team into the Division One bracket and two teams into Division Two. If the team came in first place, they'd qualify for nationals in Chicago.

In the tournament, known as a Quiz bowl, two teams of up to four members play two rounds per bout; each round lasts exactly ten minutes and four seconds. First come the toss-ups. The first individual to buzz in has two seconds to answer the question for his or her team. Two seconds of silence counts as a wrong answer, which is why many of the answers are preceded by fluff

like, "That would be..." and, "This is frackin'..." Toss-up questions are long and winding. They start with the hardest clue and progressively work their way to the easier hints. For example, a question might begin, "A teenager from this state invented a device that could penetrate underground rock formations..." and end, "...and its capital is Santa Fe" (as you all know, the answer is New Mexico and a bit of a headache).

If you can buzz in early, you get 15 points. You get 10 points for buzzing in later. Get it wrong, and your team loses five points. If you get the toss-up right, then your team gets to participate in three bonus questions, worth 10 points each, with no penalty for wrong answers.

As I finally wrapped my mind around the game's basic rules, it became clear that WUAT had two ringers. There was Arsenoff, obviously, with his furrowed brow and matter-of-frack manner of speaking. Then there was Hang, a sophomore, relatively new to the team. He'd also just joined ROTC and was wearing his camo to practice, which incidentally made him stand out more. For fairness' sake, they were put on opposing teams. Between the two of them, they answered nearly all of the questions. Hang wasn't so hard on himself when he got one wrong, but it was clear that neither of them liked to be incorrect.

In between rounds, Glaser suggested that I participate in a round at NAQT for the story. I wondered if I was qualified.

"I'm assuming you're a senior undergraduate, or at the very least, you're in your fourth year or fewer here," Arsenoff said.

"Yes," I responded.

"Then you're qualified." I still felt that I had to protest. Sure, I was technically qualified, but I wasn't sure I had the mental capabilities to keep up with the questions—to start with—and then answer them if I was even able to make it that far.

Most importantly, there was the matter of seriousness, of which I had none; the team seemed to live off it. I couldn't imagine participating in the formality of this practice, and I only imagined that it intensified in the real tournament. Every answer was succinct, judicious and rapid, a perfect little package of academic knowledge. And of course I missed another question while my mind raced.

"It's Keynes," Hang answered.

My ride to Springfield left at 5 a.m. I slept through my alarm but was relieved and surprised to learn that most everyone else in the car had too. In fact, none of them had been to Wednesday's practice. I asked junior Mohit Iyyer and senior Tianhui Shen how they drilled

for sectionals, and they both started laughing.

"We haven't been to practice since high school," Iyyer said. "I just go to tournaments."

I tried to connect his answer to my preconception that Quiz bowlers were a serious bunch. Maybe he didn't go to practice because he worked better alone. Maybe he didn't need practice; he was that good. But in truth, the case was that quiz bowl and WUAT didn't define his life. It was just something he enjoyed doing. Suddenly the atmosphere felt much looser, and we had no choice but to sing "Don't Stop Believin'" on the way down.

WUAT's Division One team faced the Missouri University of Science and Technology in the first round, and it was a rout, possibly because Wash. U.'s four-man team was going against Missouri S&T's one-man team.

Each team member had his own way of solving questions. Shen rested his hand thoughtfully on his cheek. Senior John Ahlfield almost always appeared to be sleeping, except when he'd buzz in to prove he wasn't. Iyyer often deferred to Arsenoff, even when he knew the answer.

"I think it's Cain," mumbled Iyyer.

"If you have an answer, then say it," Arsenoff said.

"It's Cain," Iyyer declared.

Arsenoff was their leader, their "captain," as the proctor liked to call him. But despite the rigid format, WUAT always looked looser than the other teams. More willing to goof off, more likely to tell the proctor to "go away" when they didn't know the answer.

And they wouldn't stop winning, either. The first game wasn't a fluke. They were up 140-20 against Missouri S&T when they missed a question on David Bowie.

"Am I the only one who grew up in the '80s?" asked the proctor, throwing up his hands.

"I remember the music video—it was weird," Ahlfield said.

"I'm old enough to remember it, but out of touch enough to not know it," Arsenoff said.

Two bouts later, WUAT faced Pittsburgh State University. Naturally, Arsenoff buzzed in for most of the questions, while Pitt State sat petrified. On the other side of the room, WUAT's members were swaying in their chairs, whispering to each other between questions, giggling when The Onion was referenced. One question managed to stump Arsenoff, so even he gave a joke answer:

"Well there are like, five Welsh last names, so I'm just going to name one.

Quiz Bowl Results

Saturday, Feb. 5

DIVISION 1

1. Wash. U. (A) (qualified for Nationals)
2. Missouri S&T (A)
3. Truman State (A)
4. Missouri (A)

DIVISION 2

1. Wash. U. (B) (qualified for Nationals)
2. Missouri (B), Harding University
4. Wash. U. (C)

Hughes."

"No, it's Stanley," the proctor responded.

Before the tournament, I was worried that I wouldn't be able to keep up, but at the tournament, the game slowed down. They weren't uptight at all. Ahlfield tapped at his Nintendo DS while "spectating" a Division Two game.

What it all meant was that when Glaser ducked out of his D2 game to "take a nap," I wasn't nervous at all to fill in for him. Things weren't as serious as I had made them out to be. I held the buzzer steadily in my hand, graciously letting my teammates field the questions on opera history and chemical bonds. Then the proctor gave me a chance. The bonus round was about Kevin Smith.

"This director of 'Gone Baby Gone,' guest-starred as a character and as himself in Smith's 'Jay and Silent Bob Strike Back.'"

The answer came to me before the question was over. I knew who had directed "Gone Baby Gone." I looked at my teammates, who sat dumbstruck. It dawned on me that I was their only hope.

"I know this," I whispered.

"Say it!"

I turned to the proctor and declared, "That would be Ben Affleck."

"Ten points," he said. Obviously, my ten points made all the difference in a game we were winning by 300. I pumped my fist, and the other team (Wash. U.'s other D2 team) laughed.

At the end of the day, WUAT came in first in both divisions, securing two spots to nationals. Ultimately, though, the greatest victory wasn't the fact that they'd systematically destroyed the other teams. The best times came when WUAT was just goofing off, belting Journey in the car or ordering a chicken-fried steak on the road.

Write to Percy Olsen at
PERCY.OLSEN@STUDLIFE.COM

cadenza

The very best of the Food Network

GEORGIE MORVIS
CADENZA REPORTER

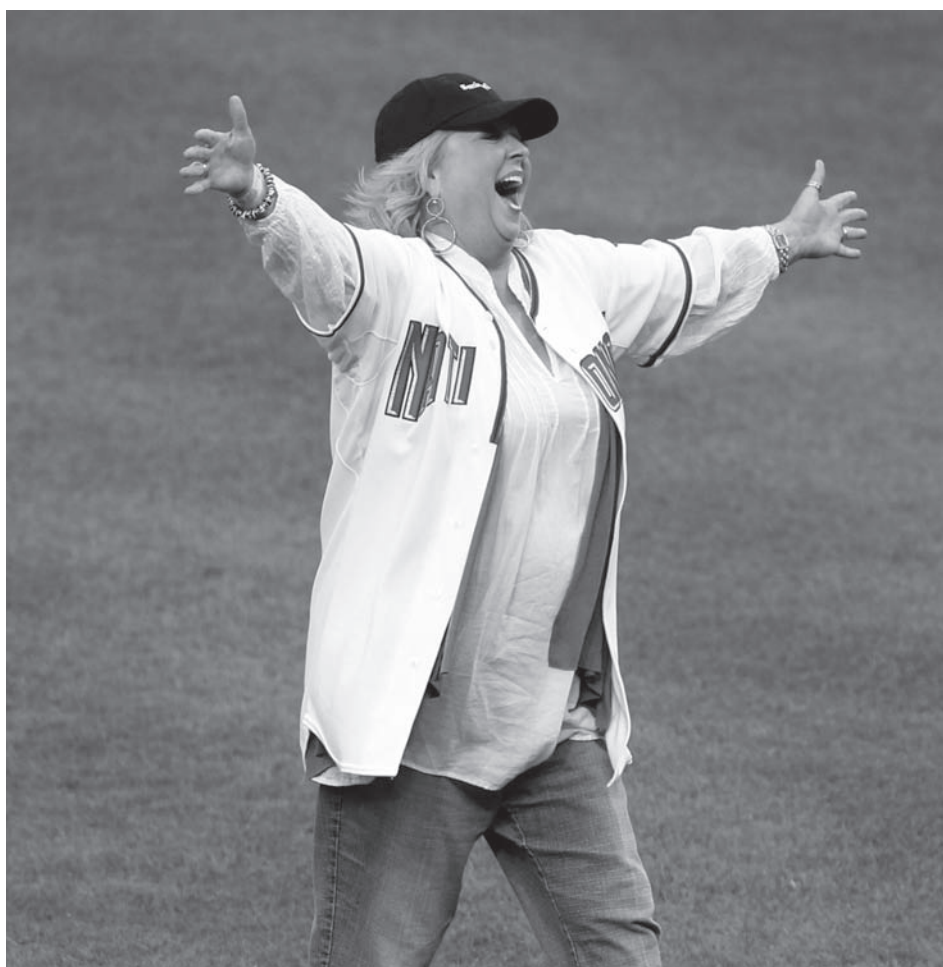
With the Grammys only a week away and the Oscars following soon after, awards season fever is rapidly setting in. This very fever (or perhaps the many hours I spent watching the Food Network during the so-called blizzard this Wednesday) led me to wonder: What if the Food Network had an awards show too? A lavish night where celebrity chefs got together to drink champagne and toast one another sounds only natural...especially in a world that already has the ESPYs. And the Foodie goes to...

Best Cinematography: "Worst Chefs in America"

Whoever does the camera work on this competition to turn the incompetent into the incredible deserves some sort of award. The cinematography manages to show just how good (or how awful) the food looks. They say the camera never lies—well, on "Worst Chefs," the camera is often the best judge.

Best Visual Effects - "Cupcake Wars"

All frosting, no cupcake. "Cupcake Wars" wins "Best Visual Effects" in a cake-walk. Their victory is à la "Avatar," because it has cool effects, some semblance of a story line and literally nothing else.



HARRY E. WALKER | MCT

Food Network star Paula Deen celebrates after throwing out the first pitch before the start of the New York Mets vs. Washington Nationals game on May 19.

Best Host - Paula Deen

Paula Deen would be the Meryl Streep of the Food Network Awards, if Meryl Streep won every time she was nominated. This southern belle can literally do nothing wrong. She's great when she's on other shows. She's great on her own show. She was on "Iron Chef" once and won. And anyone whose motto is "more butter" knows what she's talking about.

Best Show - "Iron Chef America"

This show has it all. Camp. Competition. Comedy. Drama. Delicious food. Amazing chefs. A secret ingredient. Celebrities in cameo roles. And, it's a remake. If that isn't a Best Picture winner, I don't know what is. Alton Brown, the Daniel Day-Lewis of the food world, hosts it. The Chairman is crazy and over-exaggerated, but it works. Sometimes the underdog triumphs; sometimes the Iron Chef takes the crown. Easily the best show on the Food Network, and one of the best on TV.

And if the Food Network had Razzies, "Barefoot Contessa" would sweep everything. Ina Garten is the Madonna of the Food Network.

Write to Georgie Morvis at GEORGIE.MORVIS@STUDLIFE.COM

Whalebait and Malkovich: The weirdest Subreddits

PERCY OLSEN & ADAM RUBIN
CADENZA STAFF

What is Reddit? The easiest way to describe Reddit is to call it a news aggregator. Visitors submit news stories and other knick-knacks, like pictures and cool websites, which are then voted and commented on. The stories with

the most "upvotes" receive the most visibility.

But that definition of Reddit has no heart. In reality, Reddit is a growing community of shy, witty and charitable individuals. Sometimes, this community is capable of donating \$500,000 to charity (which is what happened last year when Reddit and Colbert Nation

teamed up to donate over half a million dollars to donorschoose.org). And sometimes, this community is capable of some really weird stuff. Communities within Reddit pop up, called Subreddits, and while some of them serve the greater good, others are just there to baffle. Here, we've picked those Subreddits that make up the odd and inexplicably sticky

side of Reddit (and in case you're new to the website, we've thrown in some local Subreddits at the end that should ease you into the populace. Upvote wisely.)

Write to Percy Olsen at PERCY.OLSEN@STUDLIFE.COM

Write to Adam Rubin at ADAM.RUBIN@STUDLIFE.COM

Whalebait
(reddit.com/r/whalebait)

Population: 1,280 readers

Jailbait are attractive people that are just barely under the legal age of consent. Whalebait is the same thing...but with whales. People post pictures of whales and then jokingly (by God, I hope they're joking) comment on their sexual allure.



inglip
(reddit.com/r/inglip)

Population: 10,294 gropagas
If you have been on the Internet for a substantial amount of time, you are probably familiar with Captchas. They are the wavy words that you must type to prove you are human. A sizeable group has formed a cult that believes these words actually come from the Dark Lord Inglip. Comics arise out of members of their faith (known as gropagas), approaching Inglip and heeding his often humorous words.

Malkovich
(reddit.com/r/malkovich)

Population: 1,292 malkovich

Malkovich malkovich malkovich, malkovich Malkovich. Malkovich malkovich: malkovich Malkovich MALKOVICH! Malkovich Malkovich.

tldr
(reddit.com/r/tldr)

Population: 30,389 readers

TLDR stands for, "too long; didn't read." Not everyone has time to read at all hours of the day. Luckily, user qgyh2 does enough redditing for the rest of us. On a daily basis, he compiles the best links of the day for future viewing.

CarlHProgramming
(reddit.com/r/carlhprogramming)

Population: 9,522 readers

Carl H. is a computer science professor who took it upon himself to teach anyone on Reddit computer science who was interested. If you are interested in what all of the hub-bub is about programming or if you want to improve your skills, come and meet Carl.



Dogfort
(reddit.com/r/dogfort)

Population: 111,749 dog warriors

What happens when you take a dog dressed as a lobster, refer to him as "Team Leader Red Lobster," then make comics showing the war between the forces of cat and dog? Dogfort happens. Some are silly. Some are sad. All are hilarious.

Circlejerk
(reddit.com/r/circlejerk)

Population: Only \$27,086.99!

There is no denying that Reddit often acts as a hive mind. How best to lampoon it than to take every in-joke to its furthest possible implications? This community satirically, if not crudely, reveals how much of a circlejerk Reddit can be sometimes.



MetaCirclejerk
(reddit.com/r/metacirclejerk)

Population: 1,110 more than Circlejerk

Of course, some may feel that Circlejerk is a hive mind itself. To lampoon it, MetaCirclejerk was created.



MetametaCirclejerk
(reddit.com/r/metametacirclejerk)

Population: 921 bacon connoisseurs

But what if you feel that MetaCirclejerk is just as privy to the fleeting whims of the hive mind as Circlejerk? Then MetaMetaCirclejerk is for you!



Proper
(reddit.com/r/proper)

Population: 2,557 distinguished persons

Hear, hear. Oft times, Subreddits are overflowing with plebeians. I say! How canst one enjoy thine top hat and monocle with such lay people? This Subreddit only allows the most esteemed of conversation. Mmm. Quite.

WashU
(reddit.com/r/washu)

Population: 51 readers

There is even a community on Reddit specifically for Washington University students. Users are encouraged to post stories or simply talk about life on and around campus. Unfortunately, there currently aren't that many subscribers. Get out there and make this Subreddit popular!



StLouis
(reddit.com/r/stlouis)

Population: 746 readers

For the larger general area, StLouis is great for fun ideas of local things to do, local deals and Reddit Meetups (They're cooler than they let on.)

Student Life
READ ALL OVER

HOUSING FAIR

2011

THIS THURSDAY from 10 A.M. - 3 P.M.

2nd Floor of the DUC building

Stop by to register for an iPod Touch

Cort Furniture

Quadrangle Housing

Helix Realty

Front Door LLC
Loop Lofts

Real Property Associates
Park East Apts.

London Properties

The Gentry's Landing

Village Green

Clara Park Condos.

Roberts Place Lofts

The President

The Park Royal

The Gallery on Washington

National Real Estate Mgmt.

Villages of Wyncrest

Mills Properties

3949 Lindell

CityView Apts.

Hafner Court

The Oaks on Bonhomme

Oxford Apts.

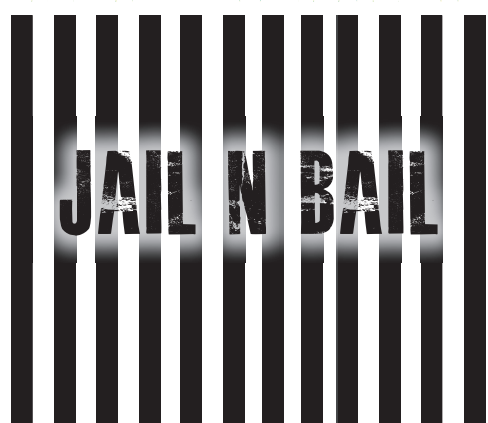
Park Clayton Apts.

Park Station

Park Val Apts.

Stanford Place Apts.

West End Terrace



Washington University in St. Louis
Habitat for Humanity
Campus Chapter

Stop by the Fun Room to bail out these notable WU figures:

Chancellor Wrighton 11am - 11:30am

Bob Hansman: 11am - 12pm

Joe Sutherland: 11am - 12pm

Kit Wellman: 12pm - 1pm

Pat Gibbons: 12pm - 1pm

Michael Offerman: 12pm - 1pm

Jeff Grim: 1pm - 2pm

Arathi Arunachalam: 1pm - 2pm

Dean McLeod: 1pm - 2pm

All proceeds from the Jail n Bail event go to Habitat for Humanity.

sports

Men's and women's track take 5th at Keck Invitational

SAHIL PATEL
SPORTS EDITOR

The Washington University track & field program continued its strong start to the indoor season over the weekend at Illinois Wesleyan University.

Competing in their second-largest meet of the year, both the men's and women's teams captured fifth at the Bob Keck Invitational.

In addition to host Illinois Wesleyan, the 2010 NCAA Division III women's outdoor track champion, the meet also featured Division I team Illinois State University and several top Division III programs, including No. 19 Monmouth College (Ill.) and No. 23 Carthage College on the men's side.

"We had a lot of good schools to compete with," junior Liz Phillips said. "It's good to have that competition, but usually we're not trying to win the meet at this time of year. We just want to do the events that help people later in the year when it really matters."

The men got off to a good start on Friday afternoon after senior Ben Harmon took first in the Bob Keck Pentathlon with 3,634 points.

Harmon also won the event in 2009.

With the victory, Harmon met a provisionally qualifying time for the Division III National Indoor Championships on Mar. 11.

"Our focus was really on Friday to try to qualify for nationals," Harmon said. "With pentathlon, you really only get one shot to qualify for nationals. Our target number was 3,700, the automatic qualifying number. There really weren't any spectacular performances, but there were no major letdowns either."

Harmon finished first in the long jump and high jump, second in the 55-meter hurdles, third in the 1,000-meters and seventh in the shot put to claim the top spot by 239 points. He also finished fifth in pole vault on Saturday.

"We just wanted to keep things moving and keep a steady keel," Harmon said. "The numbers worked out, so it was nice to win. Hopefully, everything will come around in nationals."

The men recorded their only other victory of the weekend when junior Dan Davis finished the 55-meter hurdles in 7.61 seconds, 0.12 better than junior Tyler Jackson, who finished in fourth place. Davis set a new school record in the 55-meter hurdles on Jan. 29 at the Rose-

Hulman Institute of Technology Engineer Invitational.

Davis also finished second in the 200-meter dash. His time of 22.78 was the fastest of any Bear this season.

The men's team performed well in the distance medley, as the A team of senior Chris Malaya, senior Chris Brennan, junior Paul Garcia and freshman Caleb Ford finished second to Illinois State by just 0.2 seconds. The B team of freshman Arthur Townsend, junior Matt Rickard, junior Matt Schwab and senior Alden Black had the third best time of the race, 10:36.55, but could not place ahead of any A teams according to NCAA regulations.

Malaya also finished fourth in the 400-meter dash with a time of 50.88, and Garcia added a 4:20.18 mile, good for third place.

The women's team started off slowly but got a much-needed boost from Phillips. She scored the Bears' first points of the day with a fifth-place finish in the 800-meter run before taking first in the mile run. Senior Jessica Londeree and freshman Sarah Fisher also ran well in the mile run, placing fourth and fifth respectively.

"To tell the truth, I was a little disappointed

in my mile time," Phillips said. "I was trying to run a time that would qualify me for nationals. I just didn't have everything in me that would have won it. But my teammates had some good performances, and it was good to have them with me, and it was good to win."

In her first meet for the team after recovering from an injury, Fisher followed her strong mile with a victory in the 3,000-meter run. Her time of 10:32.73 was almost two seconds faster than her nearest competitor's and was the fastest time set by a Bear this season.

"It was great because you could tell she was having a lot of fun," Phillips said. "It will be exciting to see what she can do this season."

Other notable performances include freshman Anna Etherington finishing third in the pole vault, clearing 3.50 meters. Sophomore Jennifer Ibe finished sixth in the 55-meter hurdles, and freshman Alison Cesarz finished sixth in the 400-meter dash.

The Bears will travel to Monmouth, Ill. next Saturday for the Fighting Scot Invitational.

Write to Sahil Patel at SAHIL.PATEL@STUDLIFE.COM

SCORES FROM THE WEEKEND

Men's basketball

Sunday, Feb. 6

| | 1 | 2 | Total |
|---------------------------------|----|----|-------|
| Washington University | 37 | 43 | 80 |
| Case Western Reserve University | 25 | 46 | 71 |

Points: Knepper (19), Rebounds: Gay (9), Assists: Hoener (6)

Friday, Feb. 4

| | 1 | 2 | Total |
|----------------------------|----|----|-------|
| Washington University | 35 | 30 | 65 |
| Carnegie Mellon University | 38 | 40 | 78 |

Points: Richter (24), Rebounds: Burnett (8), Assists: Hoener (5)

Women's basketball

Sunday, Feb. 6

| | 1 | 2 | Total |
|---------------------------------|----|----|-------|
| No. 7 Washington University | 32 | 37 | 69 |
| Case Western Reserve University | 19 | 28 | 47 |

Points: A. Hoover (17), Rebounds: Sayers, Morrison (5), Assists: D. Hoover (4)

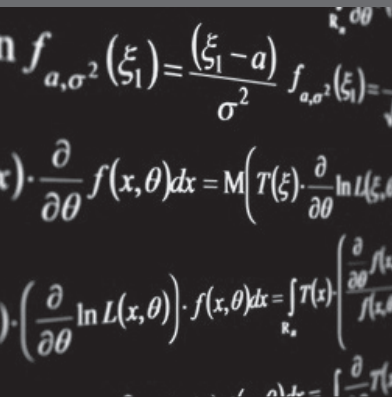
Friday, Feb. 4

| | 1 | 2 | Total |
|-----------------------------|----|----|-------|
| No. 7 Washington University | 39 | 34 | 73 |
| Carnegie Mellon University | 22 | 15 | 37 |

Points: Cusworth (12), Rebounds: Anda, Monson (5), Assists: A. Hoover, D. Hoover, Morrison, Anda (3)

puzzle mania

SPONSORED BY:



Tutoring In Math Or Physics

Princeton University Ph.D., Washington University physics professor is offering tutoring in math or physics.

Call Dr. Fu at (314) 569-0715 or e-mail goodapplefour@yahoo.com to make an appointment.

Pathem™ the path word puzzle

"Squirrel Seeks Chipmunk"
Difficulty ★★★★★ (420pts)

© 2010 Thinking Machine, Inc. All Rights Reserved.

HOW TO PLAY
Spell the phrase in the grid above it, writing each unique letter only once. The correct solution will spell the complete phrase along a single continuous spelling path that moves horizontally vertically and diagonally. Fill the grid from square to square - revisiting letters as needed to complete the spelling path in order. Each letter will appear only once in the grid.

visit www.Pathem.com

2/02 SOLUTION

"Water For Elephants"
Difficulty ★★★★★ (200pts)

FOR RELEASE FEBRUARY 4, 2011

Los Angeles Times Daily Crossword Puzzle

Edited by Rich Norris and Joyce Lewis

ACROSS

- Purchases
- One way to cope
- Key of Brahms's Symphony No. 3
- Midwest native
- Speeder's downfall
- Attorney general under Clinton
- Long story
- African title of respect
- Earth, in Essen
- OPIE
- China's Sun ___ sen
- Gallery administrator's deg.
- Cry of success
- "Wait, there's more..."
- Ring 5-Downs
- Last: Abbr.
- OBIE
- ___B: dental brand
- Trail
- In charge of
- OKIE
- Just fine, at NASA
- Hors d'oeuvre spread
- Fairbanks-to-Anchorage dir.
- To the rear
- Afternoon break
- Sportscaster
- Cross
- ODIE
- Leaf-to-branch angle
- Threshing instrument
- Cynwyd, Philadelphia suburb
- Sculptor's material
- Anatomical blood carrier
- Specialty
- Queen's home
- Blue-pencil
- Shore eagles
- River to the North Sea

DOWN

- Northwestern pear
- Where Pioneer Day is celebrated
- Teammate of Mickey and Whitey
- Simmons alternative
- Settler?
- Early light
- "Bonanza" brother
- Flier until '91
- Waiter's burden
- Thrown in
- Like Hood's men
- Tennis great
- Agassi
- Down under kids
- Thrown missile
- ___Cynwyd, Philadelphia suburb
- Tiny particle
- Dragster's org.
- Campus VIP
- Kodak product
- Rascal
- ___Clock Jump": Harry James recording
- A, in communications
- Cancún quencher
- Miles per gal., points per game, etc.
- Pop singer Lopez
- "It's ___ nothing!"
- French hot springs town
- In need of tuning
- Do some mending
- Location
- "The Whiffenpoof Song" collegians
- Church section
- Certain colorist

By Bernice Gordon 2/4/11

Wednesday's Puzzle Solved

BOSS HOBOS SCALP
YOH OIDEA PURER
CHALK TALK ORONO
AERIE LENO NIN
BRIDGE FINANCING
SNL MFA
ANTI GAGA EMBED
POWDERPUFF DERBY
TRAIN ST LOLOBE
OSS ACH
CUETH EORCHESTRA
OTB RENO ALIAS
STOLI POOLPARTY
MELON ONCD POSE
ORATE PEAS SLOTT

(c) 2011 Tribune Media Services, Inc. 2/4/11

SUDOKU

THE SAMURAI OF PUZZLES By The Mephram Group

2/4/11

Level:
1 2
3 4

Complete the grid so each row, column and 3-by-3 box (in bold borders) contains every digit, 1 to 9. For strategies on how to solve Sudoku, visit www.sudoku.org.uk

SOLUTION TO WEDNESDAY'S PUZZLE

| | | | | | | | | |
|---|---|---|---|---|---|---|---|---|
| 5 | 2 | 9 | 4 | 6 | 1 | 7 | 8 | 3 |
| 3 | 4 | 8 | 9 | 2 | 7 | 5 | 6 | 1 |
| 7 | 6 | 1 | 5 | 8 | 3 | 2 | 9 | 4 |
| 6 | 5 | 7 | 1 | 4 | 9 | 8 | 3 | 2 |
| 9 | 3 | 2 | 6 | 7 | 8 | 1 | 4 | 5 |
| 1 | 8 | 4 | 2 | 3 | 5 | 9 | 7 | 6 |
| 4 | 9 | 6 | 7 | 1 | 2 | 3 | 5 | 8 |
| 8 | 1 | 5 | 3 | 9 | 4 | 6 | 2 | 7 |
| 2 | 7 | 3 | 8 | 5 | 6 | 4 | 1 | 9 |

© 2011 The Mephram Group. Distributed by Tribune Media Services. All rights reserved.

CAREER CENTER Washington University in St. Louis

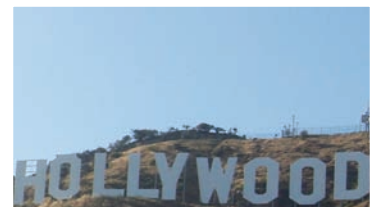
My goal... apply my Arts & Sciences background to the entertainment industry



*My Passions:
Besides theatre...
travel and
adventures*

The Career Center helped me develop an approach to the job search process. I'm more able to give it my all when I have a plan.

Don't miss the chance to apply for the LA Road show: Film & Television. The deadline is TODAY!



I interned at Lionsgate in California!

Sally Wippman, who will graduate in May 2011 with a major in drama and minors in modern dance and business, spent last summer interning at Lionsgate Entertainment in California.

Getting to know myself...

I knew I wanted to go into the entertainment business, but I soon realized **my direction needed to be more geared toward the entertainment aspect** than the business one. After a semester of experimentation in ArtSci, I declared my drama major.

I'm still approaching the same industry, but from a mindset that suits my personal interests and strengths.

Bringing my story to life...

I applied for the internship at Lionsgate after attending the LA Road Show with the Career Center. Through the informational interview at Lionsgate, I met the HR Recruiter who later became my supervisor.

Up next... I would like to try doing a few different things. I'd like to make a difference, jump in, and use everything I have to offer and put it to good use.

FROM PASSION SPRINGS PURPOSE

"If you approach an opportunity with passion, intelligence and openness, there is a good chance a door will open."

Sally's Career Tip

800+

Last year, the Career Center posted more than 800 full-time jobs.

THIS WEEK'S OPPORTUNITIES

| | |
|---|--------------------------|
| L'Oreal | Amazon |
| Centene | Bloomberg |
| Brown Shoe | Target |
| Ascension Health | Procter & Gamble Company |
| WUSTL: Office of Undergraduate Admissions | Apple |
| Groupon | Blessing Basket |

EVENTS

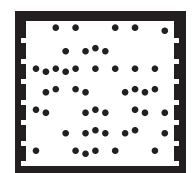
Los Angeles Road Show: Film & TV
Deadline: 2/7

Etiquette Dinner

Lunch with a Pro: International Entrepreneurship in Sustainability

Lunch with Your Peers: International Internships

Engineering Alumni and Student Reception



Get the app at
<http://gettag.mobi>

For more information visit our website careercenter.wustl.edu